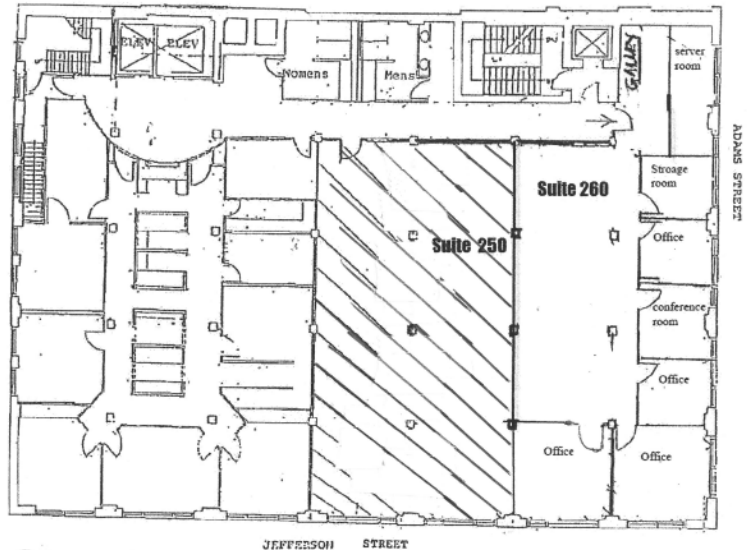
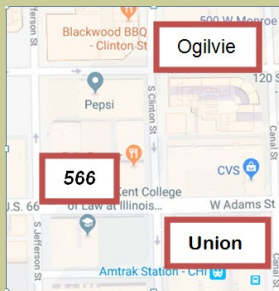


566 West Adams Street Building

Suite 260–2850-5350 rsf Available 9/1/2019

- 1-block to Union Station
- 2.5-blocks to Ogilvie
- 3-blocks to Blue Line at Congress
- Creative Loft
- 12-foot clear ceilings
- Exposed Brick
- \$26.25/rsf



5,350 rsf available
Currently split in 2850 rsf in Suite 260 and
2500 rsf in Suite 250

Suite 260 has 6 offices with 100+ feet on window line.

Suite 250 is open plan with a kitchen area.

12-foot ceilings in genuine timber loft building between Union Station (1 block) and Ogilvie Station (2.5 blocks). Call Mr. Jim Faier at Jefferson Adams Company at 312-382-7700 or email jmfaier@faier.com today.

Near all commuter rail, CTA "L" lines, and I-90/94.

Between Union Station and Ogilvie Station.

Newly Modernized Elevators



Jefferson Adams Company
566 W. Adams St.
Suite 600
Chicago, IL 60661
Phone: 312.382.7700
Fax: 312.382.9200
E-mail: jmfaier@faier.com