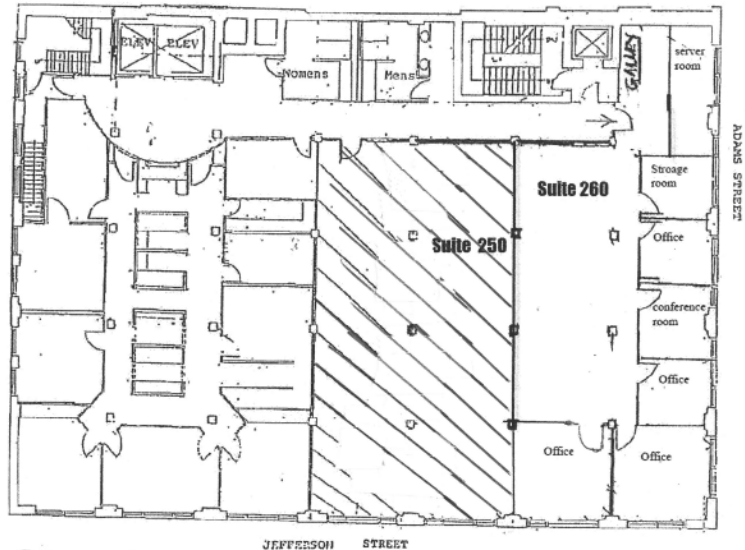
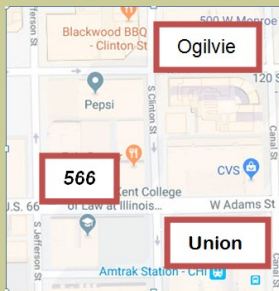


## 566 West Adams Street Building

Suite 260–2850-5350 rsf Available 9/1/2019

- 1-block to Union Station
- 2.5-blocks to Ogilvie
- 3-blocks to Blue Line at Congress
- Creative Loft
- 12-foot clear ceilings
- Exposed Brick
- \$26.25/rsf



5,350 rsf available

Currently split in 2850 rsf in Suite 260 and 2500 rsf in Suite 250

Suite 260 has 6 offices with 100+ feet on window line.

Suite 250 is open plan with a kitchen area.

12-foot ceilings in genuine timber loft building between Union Station (1 block) and Ogilvie Station (2.5 blocks). Call Mr. Jim Faier at Jefferson Adams Company at 312-382-7700 or email [jmfaier@faier.com](mailto:jmfaier@faier.com) today.

Near all commuter rail, CTA "L" lines, and I-90/94.

Between Union Station and Ogilvie Station.

Newly Modernized Elevators



**Jefferson Adams Company**  
566 W. Adams St.  
Suite 600  
Chicago, IL 60661  
**Phone:** 312.382.7700  
**Fax:** 312.382.9200  
**E-mail:** [jmfaier@faier.com](mailto:jmfaier@faier.com)